



Word Web

Objective

The student will identify the multiple meanings of words.

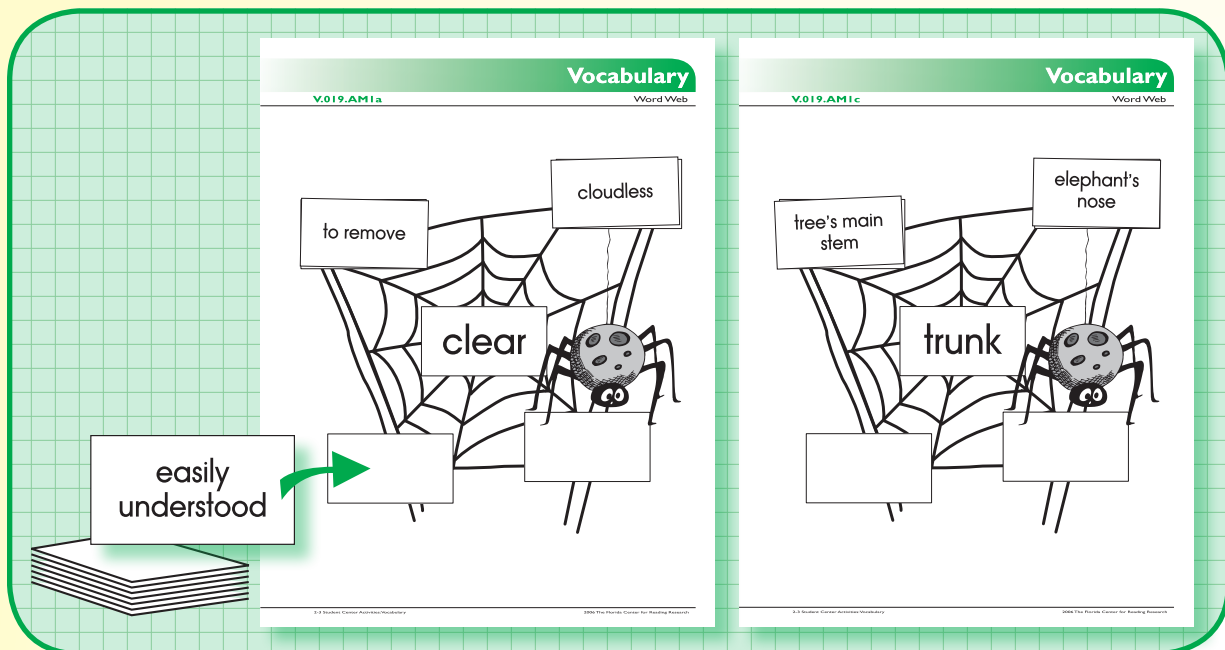
Materials

- ▶ Word Web work boards (Activity Master V.019.AM1a - V.019.AM1d)
Copy on card stock, laminate, and cut.
- ▶ Word cards (Activity Master V.019.AM2)
- ▶ Reference materials (e.g., dictionary, thesaurus, text)
- ▶ Student sheet (V.019.SS1)
- ▶ Pencil

Activity

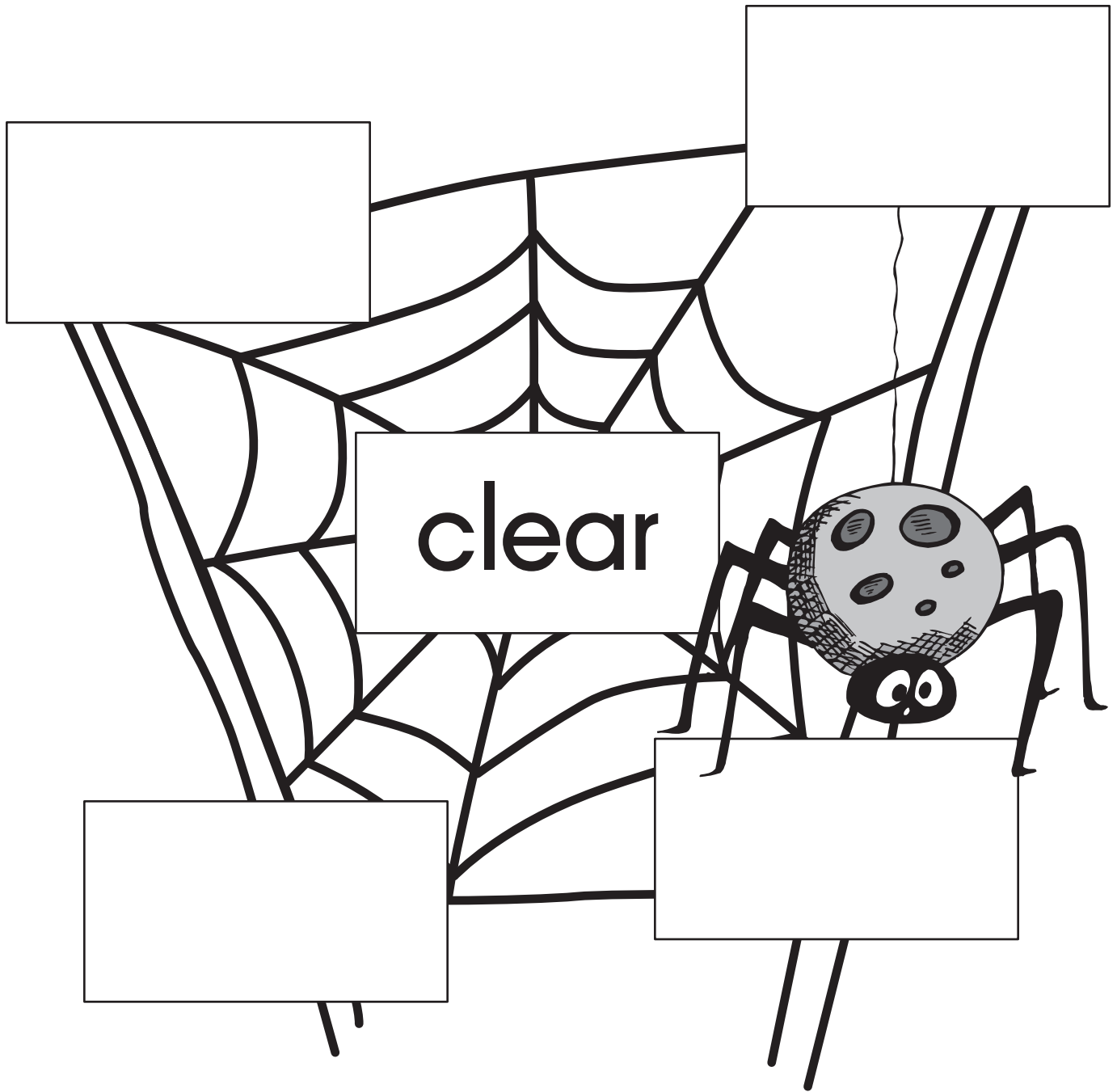
Students identify multiple meanings for a word by constructing a web.

1. Place the four Word Web work boards at the center. Place the word cards face down in a stack. Provide each student with a student sheet.
2. Student reads each target word in the middle of each Word Web board.
3. Selects a word card from the stack, reads, and determines meaning. Places in a box on the work board of the corresponding target word. Uses dictionary, if necessary.
4. Completes all four boards.
5. Records information on the student sheet.
6. Chooses one word and writes sentences to demonstrate each meaning of the word.
7. Teacher evaluation



Extensions and Adaptations

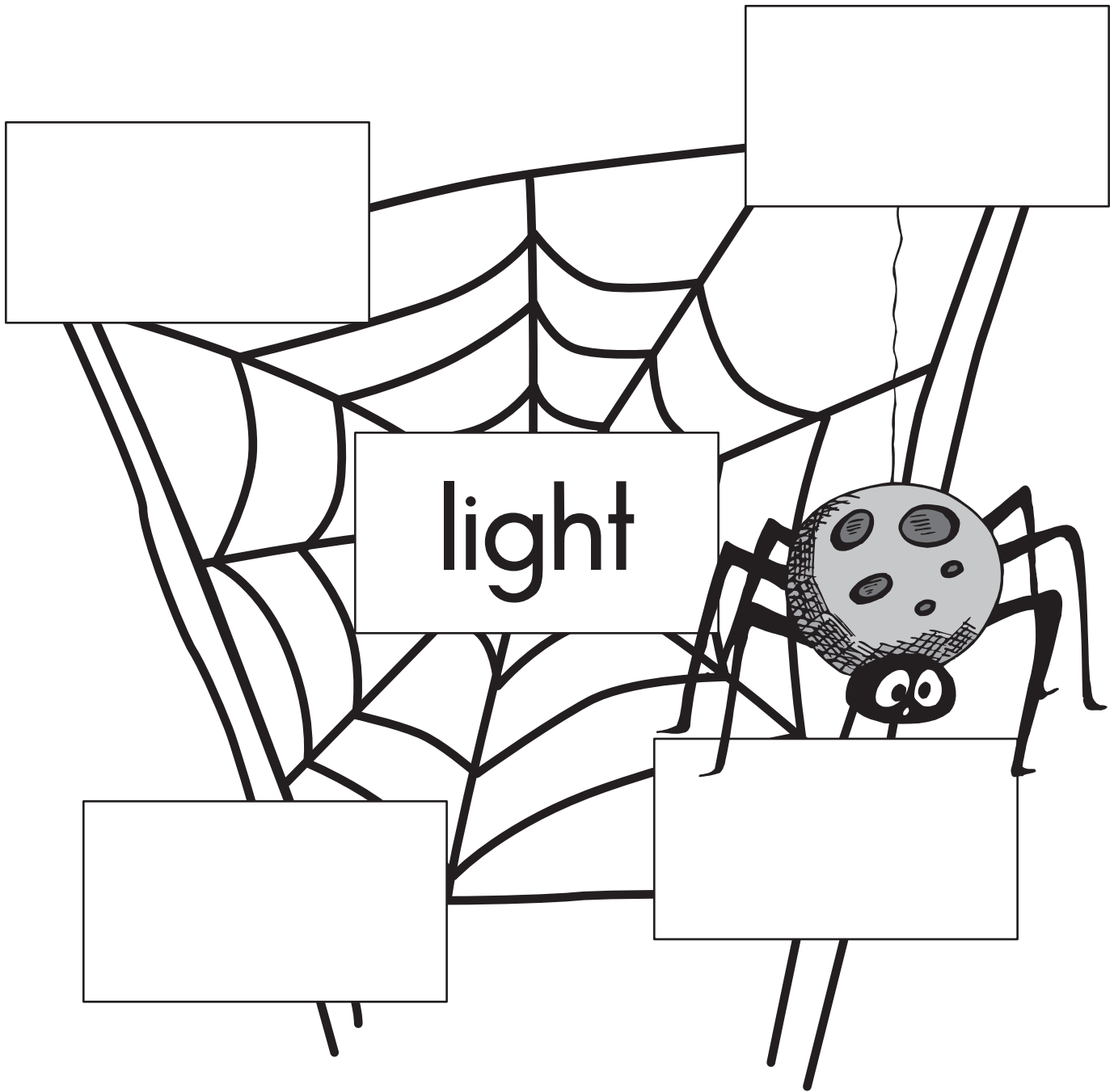
- ▶ Use other target words and write multiple meanings (Activity Master V.019.SS2 and Activity Master V.019.SS3).

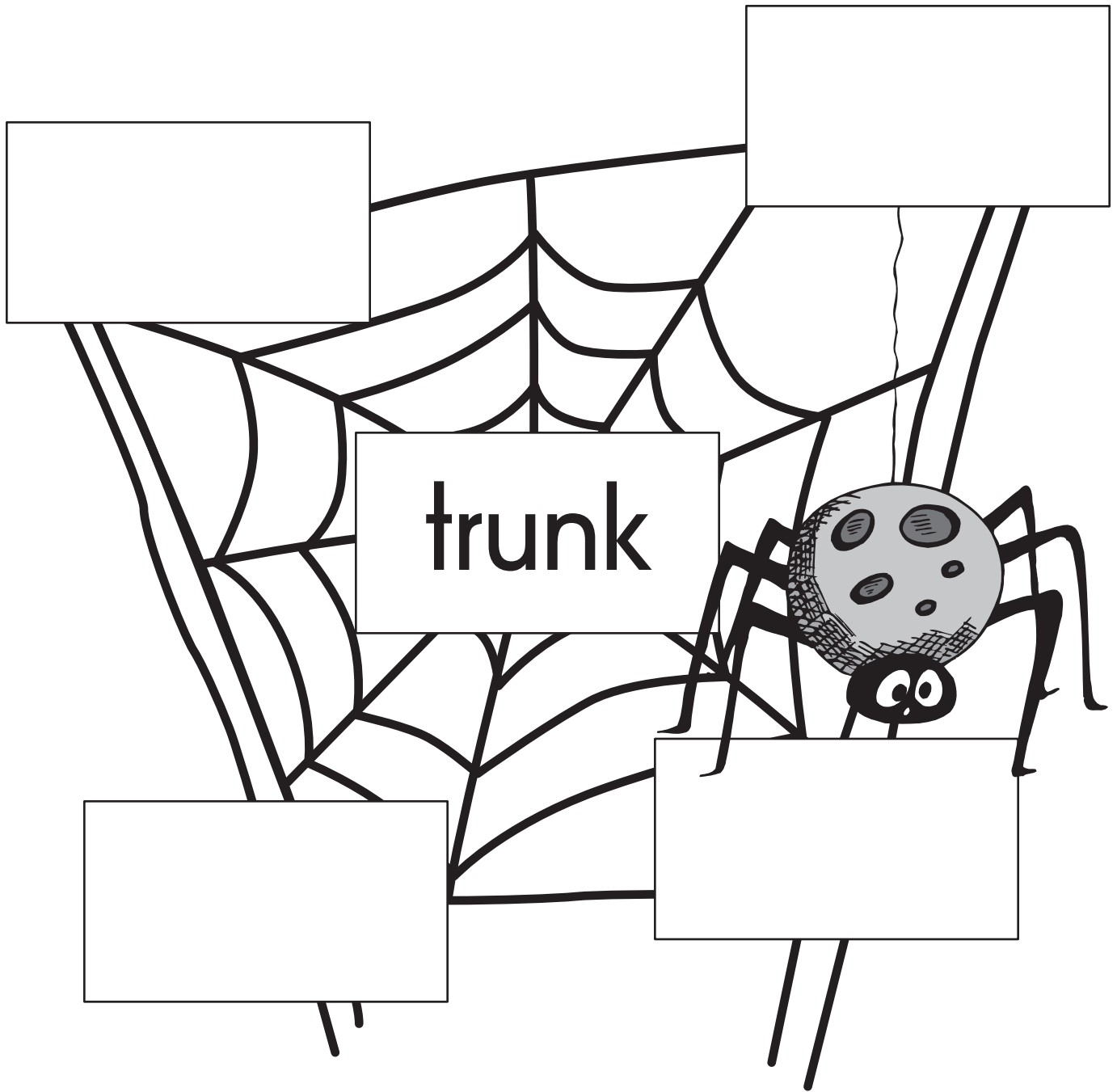


Vocabulary

Word Web

V.019.AM1b

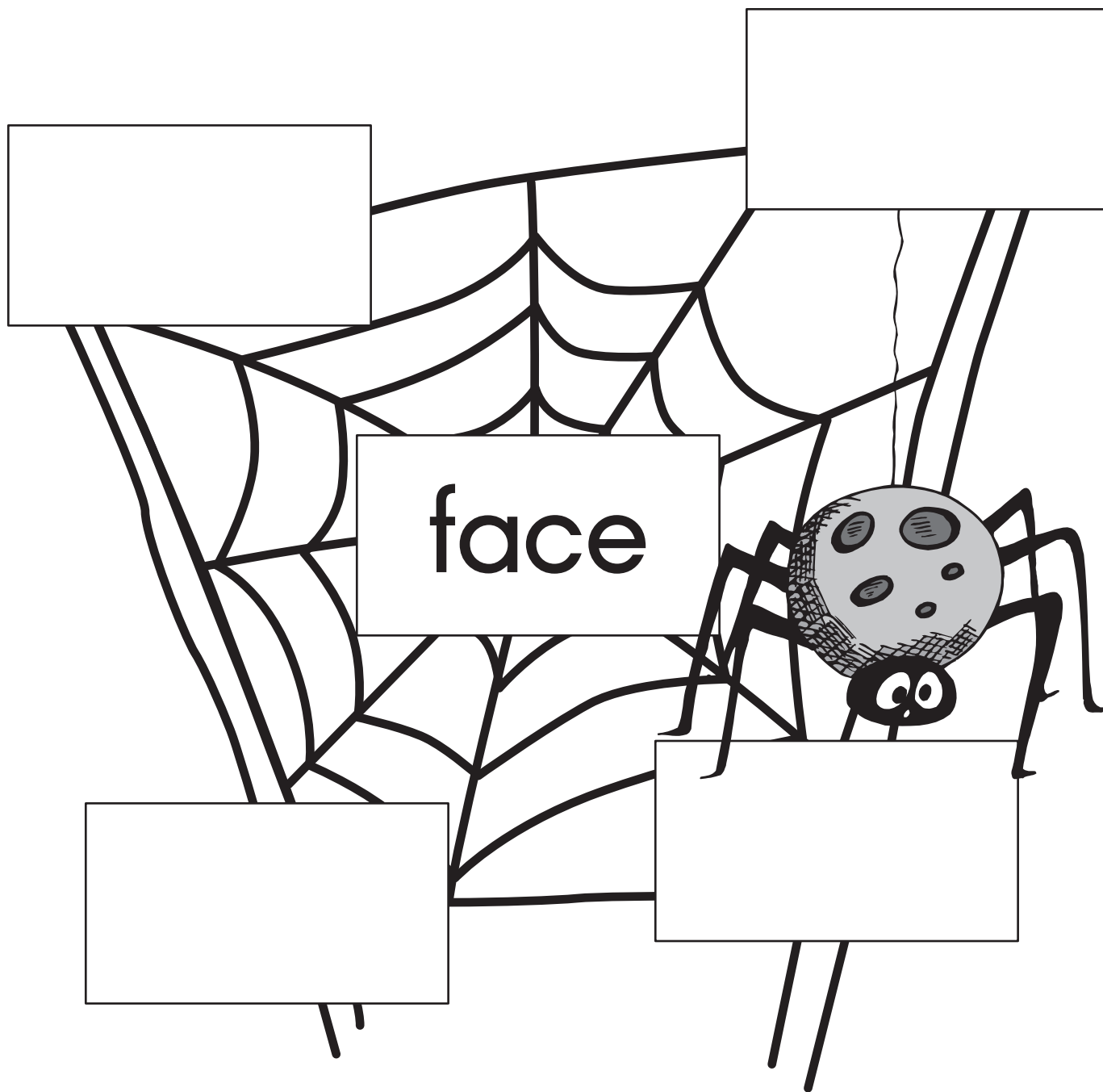




Vocabulary

Word Web

V.019.AM1d



Vocabulary

V.019.AM2

Word Web

easily understood	to remove	go by without touching
cloudless	gentle	traffic signal
not dark	not heavy	turn toward
part of the head	to have to deal with something	side of a mountain
elephant's nose	car storage compartment	tree's main stem
upper body		



clear - easily understood, to remove, go by without touching, cloudless

light - traffic signal, not dark, not heavy, gentle

face - turn toward, part of the head, to have to deal with something, side of a mountain

trunk - elephant's nose, car storage compartment, tree's main stem, upper body

Name _____

Word Web

V.019.SSI

face

trunk

light

clear

1.

2.

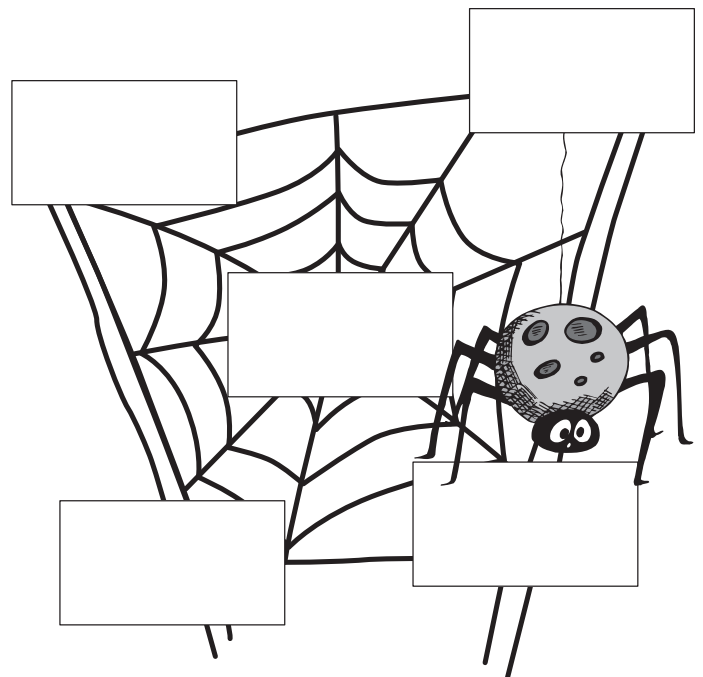
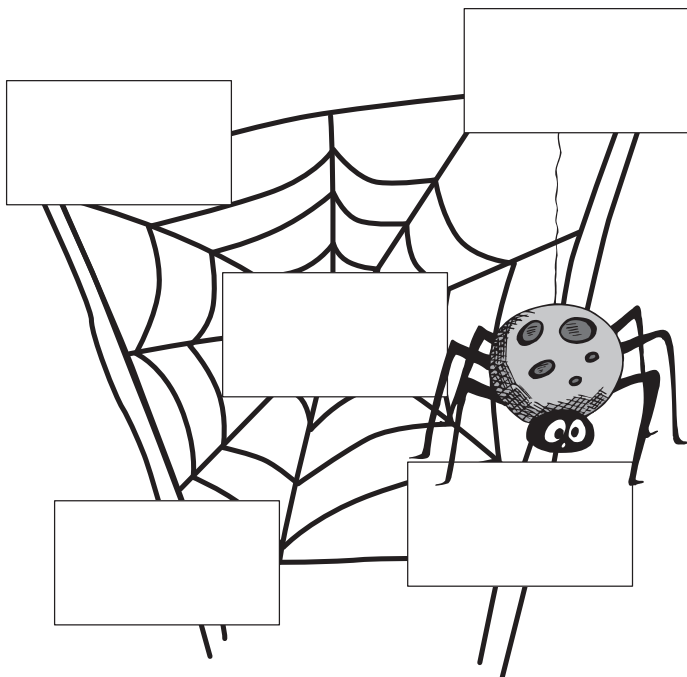
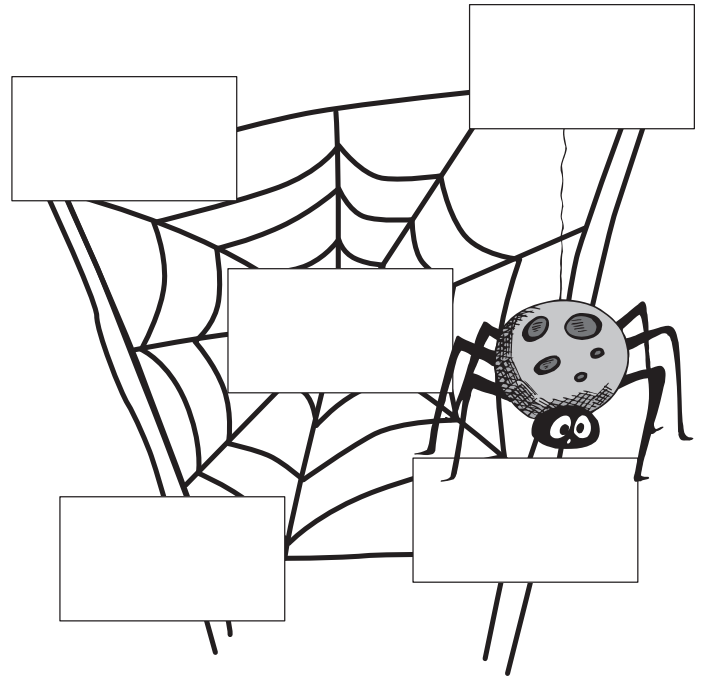
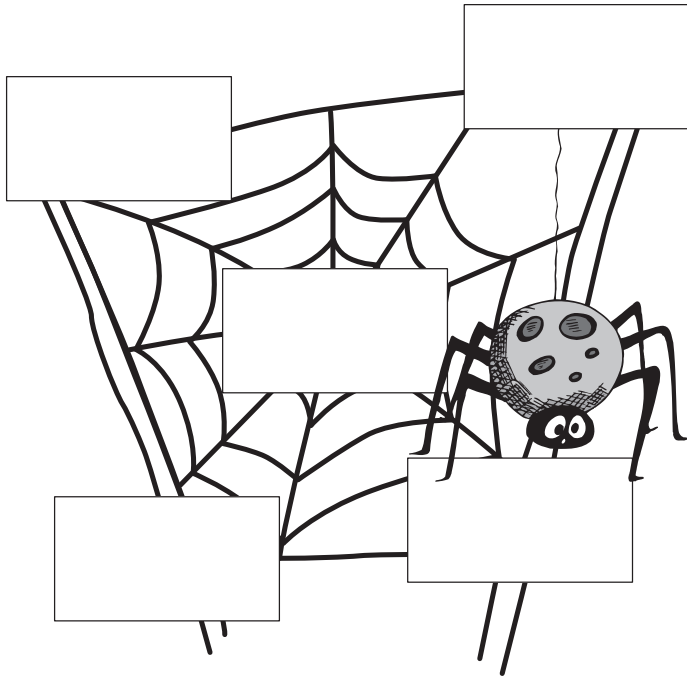
3.

4.

Name _____

V.019.SS2

Word Web



Name _____

Word Web

V.019.SS3

	1.	2.	3.	4.	